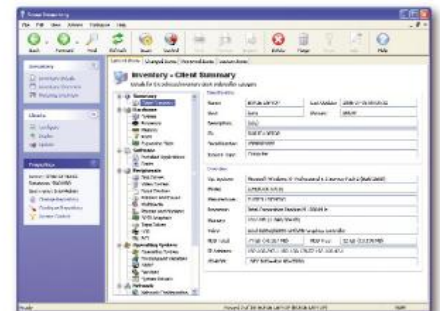




**Snow Inventory enables you to track all hardware and software in your network. Be proactive instead reactive with immediate access to accurate information.**

Knowing computers' status is essential for an efficient IT environment. Snow Inventory collects hardware and software information on all your computers. Over 200 different hardware properties as well as information about all installed software are gathered.

Do more than just reactively monitor status - Proactively manage usage, actively resolve issues and analyse all hardware usage and changes with Snow Inventory.



## Benefits

### Real time information

Instant access to detailed information about hardware and software inventory for all your computers.

### Software policy enforcer

Strengthen your software policy with Snow Inventory by preventing illegal software from being used.

### Remote control

Take control of any computer directly from the console in order to support, instruct or fix problems identified in Snow Inventory.

### Ensure your security level

Real time information show status of service packs, virus definitions etc, making it easy for you to ensure your security policy is complied with.

### Monitor changes

Snow Inventory stores all hardware and software changes or removals making it easy for you to find and analyse errors depending on historical changes, when they occurred and who made them.

### Effective planning and budgeting

With up to date information about the license status of the organisation you can easily create realistic plans and budgets based on actual usage and real needs

### Minimal administration

The innovative user interface includes functions and maintenance features such as push installation and automatic update ensures rapid deployment and effective administration.



# Features

## Hardware Inventory

- Snow Inventory collects hardware information on over 200 different hardware properties, such as

Computer System	Ports
Devices	Printers
Display Adapters	Processors
Keyboard	SCSI Adapters
Logical Disks	Tape Drivers
Memory	USB
Modems	WMI
Monitors	DMI
Mouse	SMBIOS
Multimedia	Custom
Network Adapters	PCI
Serial numbers	Expansion slots
Physical Disks	And much more...

- Snow Inventory tracks changes and removals on all types of hardware, even USB devices

## Software inventory

- Identifies, tracks and stores all software installed or executed on a computer
- Saves all changes and removals of software
- Easily scan and store information about all files on computers with the full scan option.
- Scan selected keys in the registry. Applicable for all available keys

## Additional features

- Deny usage of applications or windows to prevent users from running unwanted applications or malware
- Launch question forms in order to collect information, for example asset tag or phone number from all users
- Execute external applications or commands through Snow Inventory
- Integrated with remote control which allows you to control and manage selected computers directly from Snow Inventory's console

## Reporting

- Includes a large number of standard reports
- Use filters to create custom reports using any collected data. Print or export your reports to Excel, html, text or XML
- Open database, prepared for easy integration with other systems

## System features

- Configure software scans to include or exclude specific files, folders, network disks or local disks
- Create and manage different client's configurations to suite all clients in your organisation. Run different settings on different organisations nodes
- No user impact, possible to scan with no agent installed or installed as a prioritised service
- Easy deployment of clients via built in deployment system
- Set all clients to automatically update in order to keep your system up to date at all times
- Send data from clients to server over Https, mail or to a file share
- Secure data transport with 256-bit Rijndael encryption and communication over HTTPS secured with a SSL certificate
- Incremental scan options minimise user impact when using full scan option
- Inventory information from clients with operating systems ranging from Windows 95 to Windows Vista and Windows 7, as well as Mac OSX 10.3.9 – 10.5.5.