

## Version 3.2

# Upgrade Guide

Copyright © 2002-2009 Snow Software AB. All rights reserved.

*This manual and computer program is protected by copyright law and international treaties. Unauthorized reproduction or distribution of this manual or program, or any portions of it, may result in severe civil and criminal penalties, and will be prosecuted to the maximum extent possible under the law.*

# About this document

This document describes how to upgrade Snow Inventory 3.1 to Snow Inventory 3.2

The upgrade maintains all prior data and filters.

## System requirements

### Server requirements

Component	Requirement
<b>Database requirements</b>	<ul style="list-style-type: none"><li>• Microsoft SQL Server 2000 Standard Edition Service Pack (SP) 4</li><li>• Microsoft SQL Server 2005 Standard Edition</li><li>• Microsoft SQL Server 2008 Standard Edition</li><li>• Microsoft MSDE</li></ul>
<b>Operating System</b>	One of the following: <ul style="list-style-type: none"><li>• Microsoft Windows Server 2008</li><li>• Microsoft Windows Server 2003</li><li>• Microsoft Windows Server 2000</li></ul> <p>Snow Inventory 3.2 Server requires 20MB of free disk space. In addition the system requires disk space for incoming scan files. These can vary from 1kB to 250kB depending on which scan method is chosen.</p>
<b>Administration Console Operating System</b>	One of the following: <ul style="list-style-type: none"><li>• Microsoft Windows Server 2003</li><li>• Microsoft Windows XP Professional</li><li>• Microsoft Windows 2000 Professional</li></ul>
<b>Required server configuration</b>	Configurable (default ports used are 19730 and 19732)

### Client requirements

Component	Requirement
<b>Operating System</b>	One of the following: <ul style="list-style-type: none"><li>• Microsoft Windows Server 2008</li><li>• Microsoft Windows Server 2003</li><li>• Microsoft Windows 7</li><li>• Microsoft Vista (all editions)</li><li>• Microsoft Windows XP</li><li>• Microsoft Windows 2000</li><li>• Microsoft Windows NT 4.0 (SP4)</li><li>• Microsoft Windows 95/98/98SE/ME</li><li>• Mac OSX 10.3.9</li><li>• Mac OSX 10.4.0 – 10.5.5</li></ul> <p>Windows 95 requires an updated TCP/IP stack with winsock2 support (the Windows Socket 2 Update for Windows 95 is available for download from Microsoft).</p>
<b>Virtual environments</b>	<ul style="list-style-type: none"><li>• VMware 6 or later (running Windows operating system)</li><li>• Microsoft Hyper-V</li></ul>
<b>Ports</b>	Configurable (default ports used are 19730 and 19732)

# Prerequisites

## Download Software

Download the setup file SnowInventorySetup.exe from [www.snowsoftware.com/download](http://www.snowsoftware.com/download)

## Installation account

Logon with an account that has local administrator rights on the computer where you are installing Snow Inventory Server. You will also need an administrative account for SQL Server.

## License key

Have your Snow Inventory license key available when upgrading.

# How to upgrade the server

Close any running instances of Snow Admin console before starting the setup.

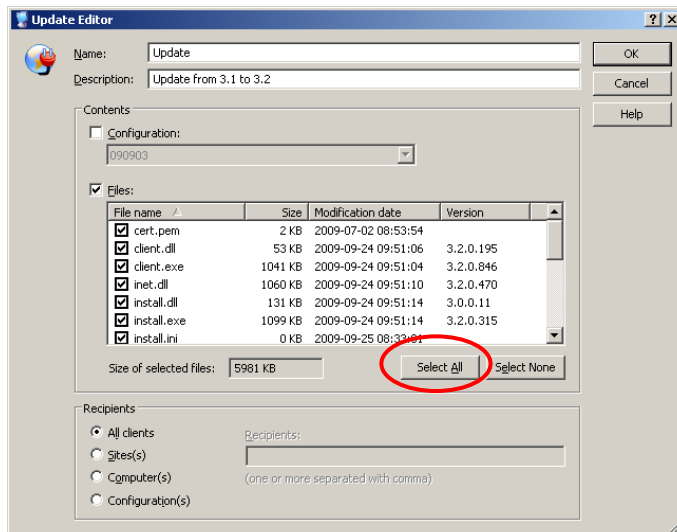
Start the setup file SetupInv3.exe and follow the instructions on the screen.

When you have finished the server installation you may need to change the access rights for the two shares created by Snow Inventory. See the Snow Inventory User guide for information on how to set the access rights for Snow Inventory shares.

# How to upgrade the clients

## Using the built in Update function

If your old clients have been set up to check the server for updates you need to set up an update package for the new clients. Start by creating a new configuration for the computers.



Select the new configuration and select the checkbox "Files" in the Update Editor.

Select all files by clicking the "Select All" button.

The next time your clients connect to the server they will be updated to the latest version.

## Upgrading clients without auto update

If your clients are not configured for auto update you will need to re-deploy the clients.

You can do this with the built in deployment tool or manually.

It is important that you distribute all files from the Client folder on your server. For more details on manual installation see the Snow Inventory User Guide.